



# The right decision.

Innovative solutions  
for the smart home.





NEW PRODUCTS  
& UPDATES

**Our newsletter.**  
Register now!

# Hi. It's us, ise.

Embedded in Oldenburg.

**WE HAVE A DEEP PASSION FOR OUR IDEAS AND THE QUALITY OF OUR WORK.**

As the saying goes, Oldenburg – not too big, not too small. Home to friendly people, kale and ise. Chilly outside, but warm at heart. Since 1996, we have dedicated endless passion to the development of software and electronic products for the professional smart home sector.

We're currently made up of 150 talented technology specialists from all over the world. Regardless of where we come from, though, we all have one thing in common: source code, not dress code! We develop with a passion. Whether it's for desktops, embedded systems and server/PC software or app solutions for smartphones and tablets, our team of committed women and men guarantee creative and reliable solutions to even the most complex problems.



**KNX** SONOS Vaillant

**AXIS** Saunier **Panasonic** hue  
COMMUNICATIONS Duval

**Strong brands for e-mobility**

**ABB** **ABL** ALFEN ebee HEIDELBERG **KEBA**  
POWER TO ADAPT SMART TECHNOLOGIES Automation by innovation.

MENNEKES Schneider Electric **SCHRACK** mobility ... and growing with every update!  
MADE BY STORCK

# Smart ideas from ise.

SMART CONNECT KNX <b>Remote Access</b> Remote Access done better.	6
SMART CONNECT KNX <b>e-charge II</b> Energy management easy at last.	12
SMART CONNECT KNX <b>Hue</b> Light on, dimmed or coloured. All without an app.	18
SMART CONNECT KNX <b>Vaillant</b> Intelligent heating control via KNX.	22
SMART CONNECT KNX <b>Saunier Duval</b> Intelligent heating control via KNX.	26
SMART CONNECT <b>Modbus Vaillant</b> Easy access to Vaillant GeoTHERM/3.	30
SMART CONNECT KNX <b>Panasonic</b> Panasonic and KNX. Pretty smart friends.	34
SMART CONNECT KNX <b>Programmable</b> Everything's possible.	38
<b>KNX RF Multi:</b> The next generation radio.	42
KNX RF Multi/TP <b>mediacoupler or RF repeater</b> "Simply The Best!"	44
KNX RF Multi <b>radiator thermostat</b> Loooong lasting comfort.	48
KNX RF Multi <b>USB interface</b> Program and analyse.	52
SMART APP KNX <b>Axis</b> KNX can now see.	54

Every day, we work to ensure that KNX can do more to make living spaces even smarter.

**Our vision is to integrate every device into building automation with KNX.**

This catalogue presents our entire portfolio of products, which we have developed with exceptional quality, in-depth expertise and a profound passion for smart living.

*Let's go!*

# Remote Access

## done better.

### SMART CONNECT KNX Remote Access

Easy setup and remote configuration and operation – for easier work and reduced costs for configuration, installation and maintenance. End customers save costly installer call-outs and can access their network remotely to control visualisations, for instance.



#### Plus points

- | Secure and simple teleservicing from anywhere (e.g. ETS, various configuration tools, heating systems, etc.)
- | Flexible remote access on the go (e.g. visualisations, printers, cameras, etc.)
- | Meet customer requirements faster – no more appointments or journey times
- | Quick setup – no router configuration required
- | Independent of provider and type of Internet access (mobile or landline)
- | Security through access control and encryption
- | Event notification via push, e-mail, SMS or voice call
- | Convenient notification and attachment viewing in the Remote Access mobil app for smartphones
- | No follow-up costs (excluding SMS services, voice calls)<sup>1</sup>

#### Technical data

<b>Rated voltage:</b>	DC 24 V to 30 V
<b>Power consumption:</b>	2 W
<b>IP communication:</b>	Ethernet 10/100 BaseT
<b>KNX communication:</b>	KNX/TP, S mode
<b>KNX medium:</b>	TP1-256
<b>microSD card:</b>	Up to 1 TB (SDXC)
<b>Connections:</b>	2 x RJ45 (integrated switch) Connection and branch terminals for KNX and 24 V
<b>Ambient temperature:</b>	0 °C to +45 °C
<b>Dimensions:</b>	2 HP (DRA plus)

**Note:** Supply via external DC 24 V. The microSD card is not included in the scope of supply. For ETS5 or higher.



#### Ordering info

Order no. 1-0003-004

<sup>1</sup> Chargeable additional service seven or Messagebird resp. IFTTT (Pro version)

**TELESERVICING FROM ANYWHERE**

Qualified electricians save themselves and their customers time-consuming call-outs and use their resources efficiently! Desired changes and system maintenance can be carried out quickly and individually from the office or even while on the go – anywhere in the world.

Maximum flexibility is also guaranteed: KNX system maintenance is possible via ETS and even non-KNX systems such as heating or telephone systems can be maintained via the integrated OpenVPN server.



**ACCESS VIA VPN**

The SMART CONNECT KNX Remote Access can function as an OpenVPN server. This makes it possible to work in the remote network without complicated router settings and to carry out remote maintenance flexibly – not only using ETS, but also with a variety of other configuration tools. VPN access also provides end customers with convenient remote access to their home network in order to control their visualisation remotely, for instance.



**REMOTE ACCESS TO YOUR VISUALISATION**

You can also access your visualisation remotely, making sure you can keep an eye on your building at all times. Regardless of whether the visualisation is web-based or not, the integrated VPN gives you flexible access to all devices in the network!



**REMOTE DIAGNOSTICS ANYWHERE AT ANY TIME**

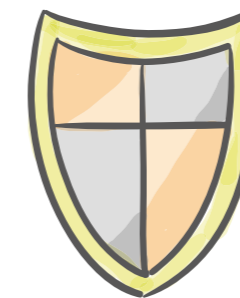
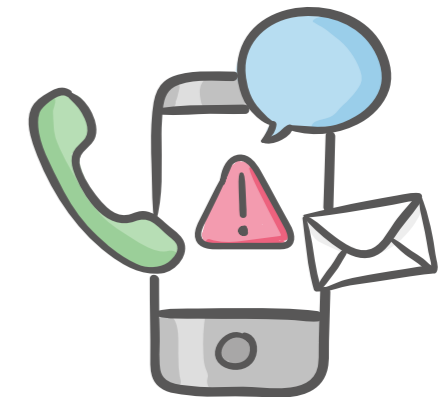
If desired, the data logger can record all KNX telegrams on an SD card. In the event of installation problems, simply import the logs into the ETS group monitor and identify the cause – without having to visit the customer or lie in wait "live" for hours!

**IMPORTANT EVENTS ON YOUR SMARTPHONE**

Is everything OK at home? Our remote access provides support for up to 50 notifications at different danger levels. Is it just someone ringing the doorbell or has the smoke alarm device gone off? You will receive notifications on your smartphone. Whether push notification, voice call, SMS or e-mail, you decide how you'd like to be informed.

You can configure each trigger for notifications individually based on filters, conditions or by threshold value with or without hysteresis. For example, you will only receive a notification when the room temperature drops to a level that you have specified. And if you use surveillance cameras, you can configure notifications to include a current image as an attachment.

The Remote Access mobil app for your smartphone means you can conveniently view your notifications, scroll through attachments and access devices in your home network via the "Links" function.



**SECURITY**

You decide who can access your system with the simple press of a button via our access and user management. Thanks to data transfer encryption, there's no chance of prying eyes. The SMART CONNECT KNX Remote Access also supports KNX Secure for secure data transfer on the KNX bus.

**INACCESSIBLE FROM OUTSIDE?**

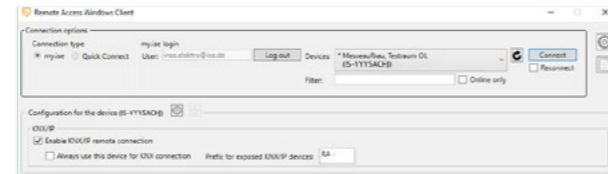
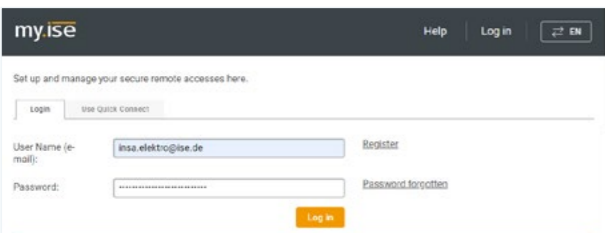
Is the IP address of your connection inaccessible from outside because you are connected via mobile or landline, for instance? No problem! Our solution works here, too.

**Product benefits at a glance**

- | Secure teleservicing and configuration of KNX systems via ETS
- | Thanks to integrated VPN<sup>1</sup>, all devices and systems in the network can be maintained remotely
- | Secure remote access to devices in the network (e.g. visualisations, routers, network storage, printers, cameras)
- | Convenient remote diagnostics by storing and retrieving telegram recordings with the data logger
- | Up to 50 notifications (push, e-mail, SMS<sup>2</sup>, voice call<sup>2</sup>, IFTTT), optionally with attachments
- | Individual configuration of notification triggers (filters, conditions, threshold values, hysteresis)
- | Convenient viewing of notifications and attachments in the Remote Access mobil app for smartphones
- | Clock function to send time and date to the bus in configurable intervals
- | Full KNX Secure support
- | Access management with users and groups, can also be controlled via KNX objects
- | Secure data transfer through encryption
- | Integrated Ethernet switch with 2 x RJ45 sockets
- | Integrated IP interface with up to three tunnel connections (e.g. for ETS bus or group monitor)
- | Regardless of the type of Internet access (e.g. mobile or landline)
- | Optimised KNX/IP communication via mobile and very slow connections
- | Unlimited usage duration and 5 years of guaranteed server operation
- | Server located in Germany in accordance with GDPR and German Federal Data Protection Act (BDSG)
- | Additions via firmware updates

**One way of many: four simple steps to the KNX system.**

**1. Insert and connect device:**  
Simply place on the top-hat rail and connect the KNX IP network and power supply.



**2. Register the device on the portal:**  
Log onto the portal my.ise.de with your user data and register the SMART CONNECT KNX Remote Access with its registration ID (one-off).

**3. Install and launch the Remote Access client software for windows:**  
Download the Remote Access client for Windows from www.ise.de/service/downloads and install it on your PC. Launch the Remote Access Windows client software and enter your user data. Select the registered device and open the connection.

**4. Start the ETS, select interface and you're ready to go:**  
Start your ETS Professional and select a bus connection. You can now work with the ETS as normal, just as if you were there in person.



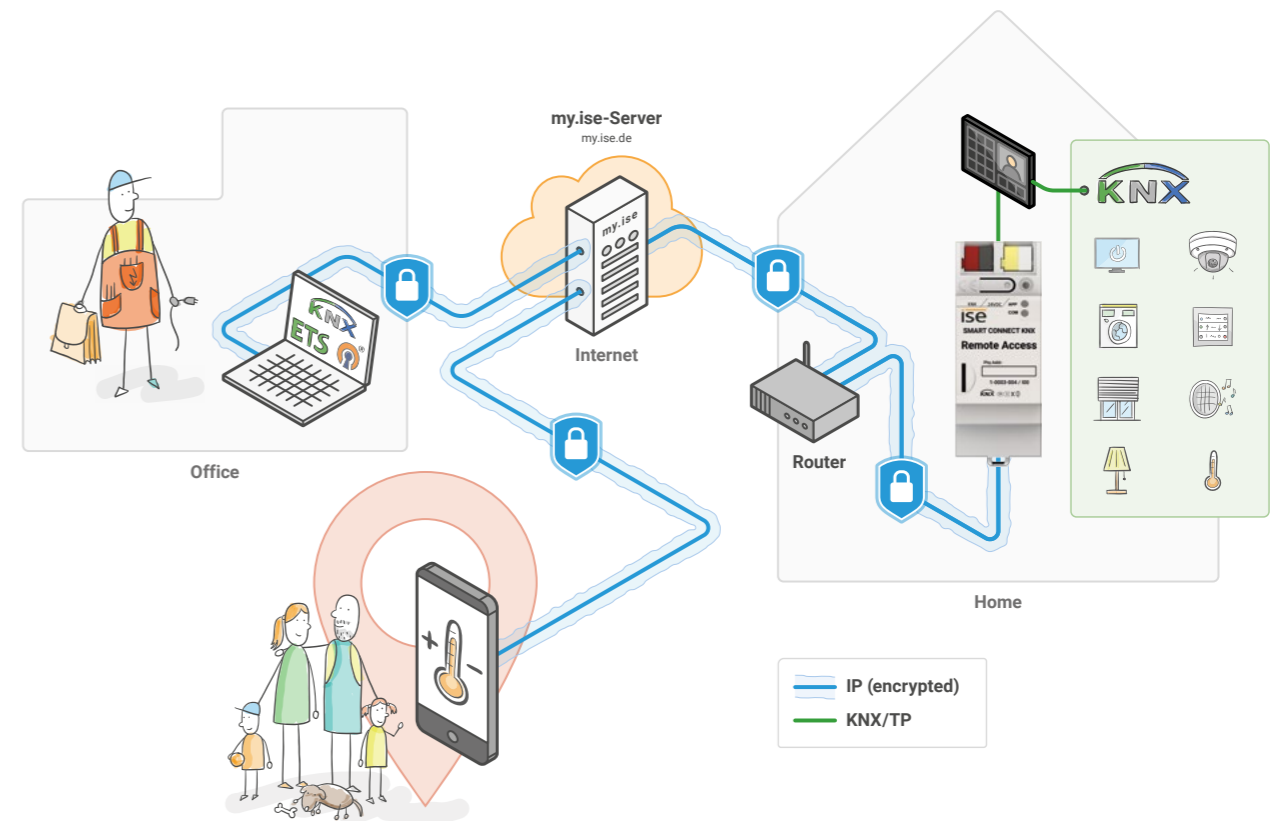
# How it works. Simple.

The SMART CONNECT KNX Remote Access is simply connected to the home network. It connects to the server (my.ise.de) automatically through your existing Internet access. Communication between the Remote Access and the server is encrypted and secured with digital certificates. The server is located in Germany and is subject to the German Data Protection Law and the GDPR.

The Remote Access is connected with the home KNX installation via the KNX connection. This means that qualified electricians and end customers can access KNX devices from anywhere using the ETS, for instance.

With a connection to the home network, all network devices can be accessed via the Internet. Depending on the device's supported network protocols, access takes place directly via the my.ise.de portal, the Remote Access Windows Client software available for Windows or via VPN. The SMART CONNECT KNX Remote Access also functions as a VPN server, thus offering completely flexible teleservicing and remote access to both qualified electricians and end customers.

Individual users or groups can be approved or blocked for access, giving occupants full control of access when not at home.



<sup>1</sup> Possible to choose between Layer 2 (TAP) and Layer 3 (TUN) to use VPN on Windows: <sup>2</sup> Chargeable additional service seven or Messagebird resp. IFTTT (Pro version)

# Energy management easy at last.

## SMART CONNECT KNX e-charge II

Use charging points from different manufacturers in your smart home with SMART CONNECT KNX e-charge II. It really is this simple! With SMART CONNECT KNX e-charge II and the use of DLM smart home technology, charging is now also possible even with small household connections. The available electricity is evenly distributed to all charging points, preventing the household connection from becoming overloaded.



### Plus points

- | Simple and secure integration of charging points into the KNX
- | Clear overview of supported functions of the charging points
- | Various different manufacturers and even mixed operation possible
- | Fast vehicle charging thanks to dynamic load management
- | Static load management (SLM)
- | Ever-growing list of supported charging points and functions
- | No additional adapter required

### Technical data

<b>Rated voltage:</b>	DC 24 V to 30 V
<b>Power consumption:</b>	2.3 W
<b>IP communication:</b>	Ethernet 10/100 BaseT
<b>KNX SPECIALIST</b>	
<b>Connection:</b>	Bus connection terminal
<b>Medium:</b>	TP1, S mode
<b>Current consumption:</b>	typ. 6mA
<b>IP</b>	
<b>Connections:</b>	2 x RJ45 (integrated switch)
<b>Communication:</b>	Ethernet 10/100 BaseT (100/100 Mbit/s)
<b>RS485</b>	
<b>Connection:</b>	Screw terminal, 3-pin (GND, A+, B-)
<b>Communication:</b>	Modbus
<b>Data rate:</b>	Max. 500 kbps
<b>Cable length:</b>	Up to 1200 m
<b>Electrical isolation:</b>	3 kV DC
<b>Ambient temperature:</b>	0 °C to +45 °C
<b>Dimensions:</b>	2 HP (DRA plus)

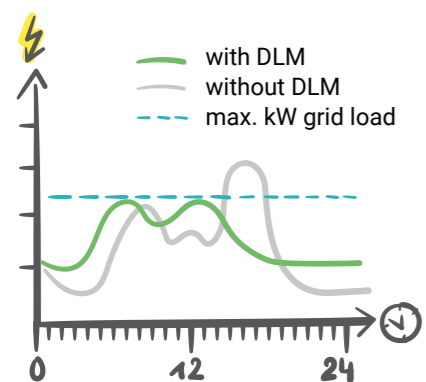
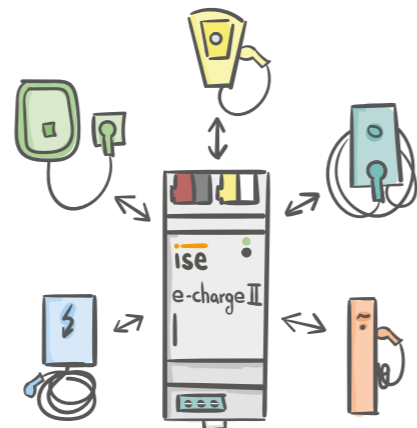
**Note:** Supply via external DC 24 V. For ETS 5.7.5 or higher.

### Ordering info

Order no. 1-000F-003

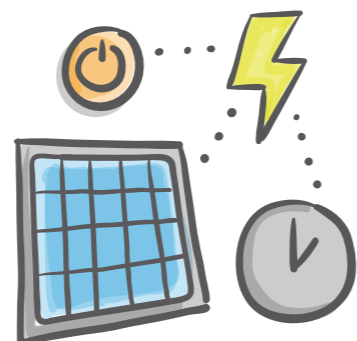
**DIFFERENT MANUFACTURERS AND MIXED OPERATION**

Need to use charging points from different manufacturers or retrofit other models? No problem! Up to five charging points from different manufacturers can even be integrated in mixed operation. This offers maximum flexibility in terms of different brands and models.



**LOAD MANAGEMENT**

Load management is offered by almost every charging point manufacturer, but only for the charging points from the manufacturer itself or sometimes even for the same models. E-charge II enables even more! Dynamic load management (DLM) means it is not only possible to use maximum charging current, but also distribute it across all charging points at the same time, regardless of manufacturer and model.



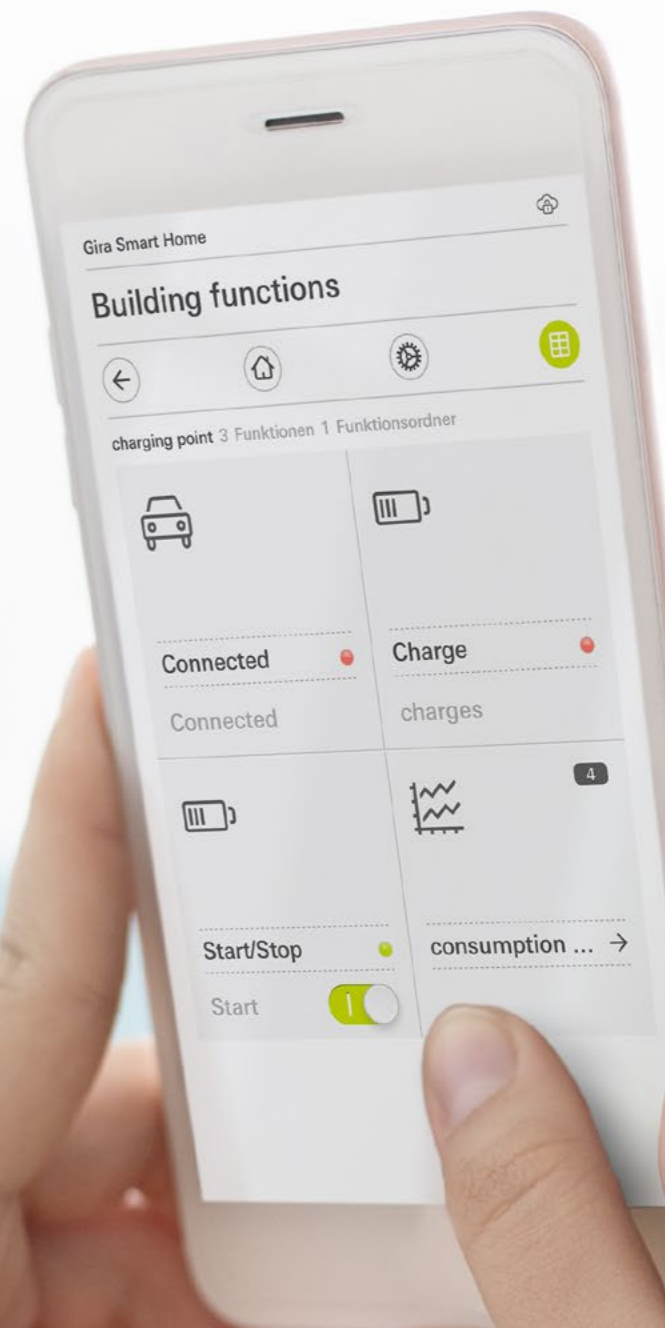
**USING PHOTOVOLTAIC TECHNOLOGY**

If your PV system generates too much energy, the surplus energy can be used to charge your vehicle! By integrating the e-charge II into your logic, the charging current can be set accordingly in the event of a surplus and the charging process started.



**VISUALISATION AND CONTROL**

How many cars are being charged at your charging stations? How much power is currently flowing into the car or how much energy has been used to charge vehicles so far? Control when charging can take place or lock the charging point – everything is possible! The e-charge II offers the functions required to be able to display this in your visualisation!





**Product benefits at a glance**

- | Integration of five charging points per device
- | Prioritisation of one charging point
- | Dynamic load management (DLM) integrated
- | Static load management (SLM)
- | Charging points from different manufacturers can be used at the same time
- | Grid-supporting control
- | Charging currents can be controlled without load management (e.g. surplus current charging)
- | Consumption values (electricity, power, energy consumption and energy consumption and duration of last charge)
- | Status values (connected, charging, charging complete, charging point status)
- | Start/stop, lock, interrupt or unlock a charging process
- | Temperature value and temperature warning
- | Information on vehicle ID and RFID tag
- | Information on serial number and firmware version of charging point
- | Fault messages from charging point and device
- | Integrated RS485 adapter and IP switch (2-gang)
- | KNX Secure
- | Completely configurable in ETS
- | Additions via firmware updates

**Note:** Some functions are manufacturer-dependent

**Strong brands and models**



Supported charging points:  
[www.ise.de/en/e-charge-2](http://www.ise.de/en/e-charge-2)

Your charging point is not yet included?  
Send us an e-mail to [support@ise.de](mailto:support@ise.de)

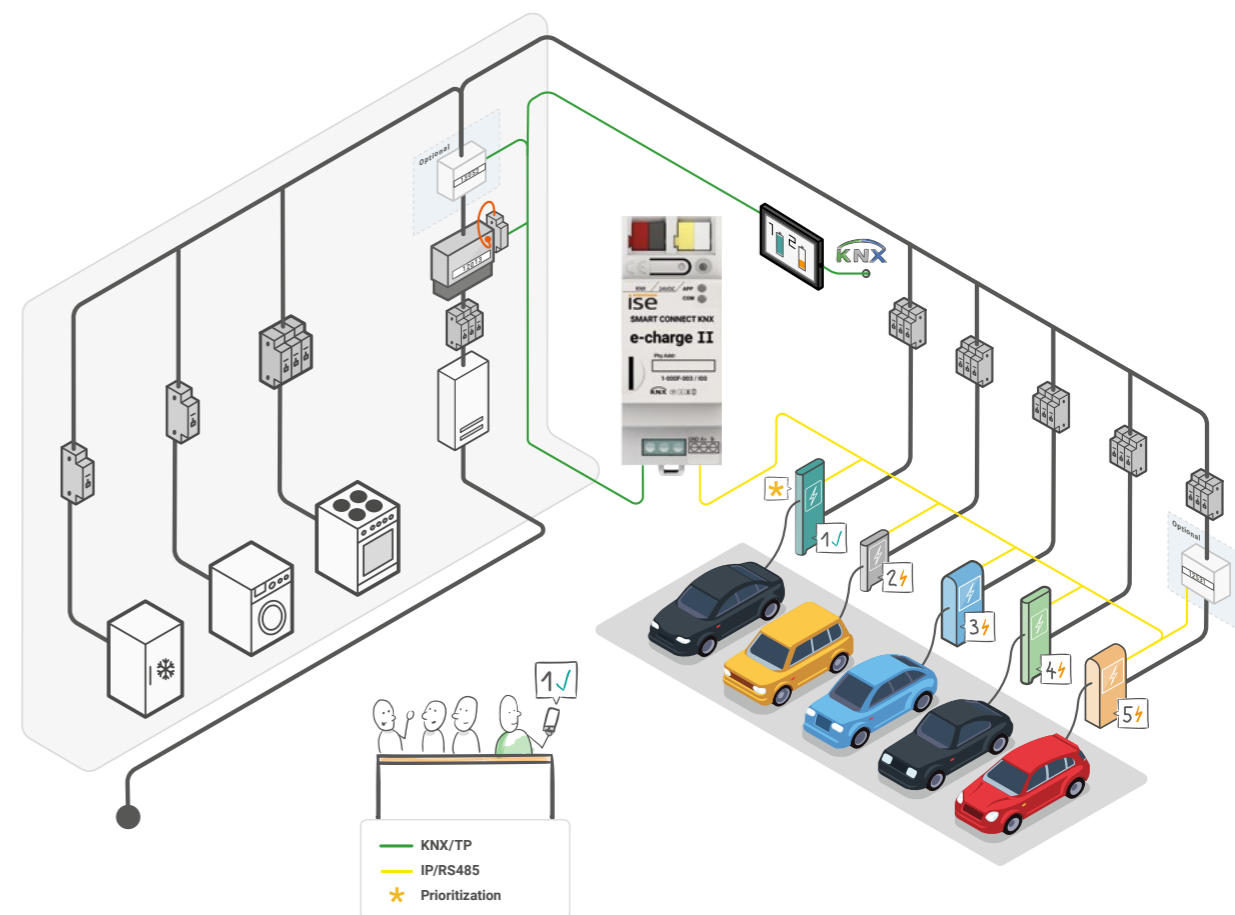
We are continuously working to expand our offer through the integration of more manufacturers.

# How it works. Simple.

Energy consumption often presents a problem. Too small a mains connection and several energy-consuming appliances in the household at once lead to long charging times with a low charging current. The energy supplier has to install a stronger supply line, which comes with high investment costs. With the SMART CONNECT KNX e-charge II and the use of DLM smart home technology, charging is now possible even with small household connections. The available electricity is evenly distributed to all charging points, preventing the household connection from becoming overloaded.

In companies or hotels, several charging points need to be operated at once. The SMART CONNECT KNX e-charge II allows up to five charging points per gateway.

With the SMART CONNECT KNX e-charge II and a smart meter, DLM enables high power-consuming appliances to be taken into account while avoiding load peaks. The prioritisation of one charging point offers additional benefits for a wide range of use cases.



# Light on, dimmed or coloured.

## All without an app.

### SMART CONNECT KNX Hue

Hue is the retrofit solution for existing buildings. Whether you want to configure your own sunrise or set the right scene for your house party, the SMART connect KNX Hue has the perfect solution. Thanks to the innovative KNX adapter, up to 25 Hue lights can be controlled by each dimmer or switch via KNX. The LED technology in the light sources opens up a broad spectrum of light tones, from warm to vibrant. Individualized RGB values can be specified for each light.



#### Plus points

- Control portable lighting like bedside lamps and floor lamps
- Execute scenes from the Philips Hue System via KNX
- Control up to five Philips Hue Bridges with one single device
- Trigger visual notifications through signal flashing from Philips Hue scenes via KNX
- Compatible with common Color Pickers (Gira, Elsner, Jung)

#### Technical data

<b>Rated voltage:</b>	DC 24 V to 30 V
<b>Power consumption:</b>	2 W
<b>IP communication:</b>	Ethernet 10/100 BaseT
<b>KNX communication:</b>	KNX/TP, S mode
<b>KNX medium:</b>	TP1-256
<b>microSD card:</b>	Up to 32 GB (SDHC)
<b>Connections:</b>	2 x RJ45 (integrated switch) Connection and branch terminals for KNX and 24 V
<b>Ambient temperature:</b>	0 °C to +45 °C
<b>Dimensions:</b>	2 HP (DRA plus)

**Note:** Supply via external DC 24 V. For ETS 5 or higher.



#### Ordering info

Order no. 1-0002-003



**USING AND DIMMING PORTABLE LIGHTS**

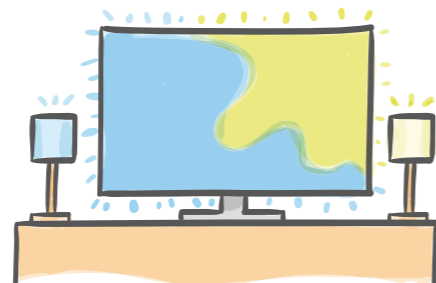
Take advantage of the opportunity to integrate portable lights into your KNX system straight away – even dimming them (unlike with other lighting controls). You can wake up to a simulated sunrise in the morning, for example.

**BEDTIME AND WAKEUP SCENARIOS**

To help children fall asleep more easily, the level of brightness can be reduced. In the morning, a simulated sunrise ensures natural awakening.

**SIGNALLING EVENTS**

Someone is pressing the doorbell button, the washing machine is finished or a call signal is being initiated. Use Philips Hue lights together with KNX to signal events. You can make the lights flash green when someone presses the doorbell button, for example, so that sleeping children are not woken by a ringing doorbell.



**AMBILIGHT TV, PHILIPS HUE AND KNX**

If you have a Philips television with the Ambilight function, Philips Hue makes your viewing experience even more intense, colourful and captivating. The same lights can be controlled via KNX.

**USE LIGHT AGAINST INTRUDERS**

The Philips Hue system can be easily integrated into the occupied-home simulation via KNX. This "puts a spotlight" on uninvited guests, too.



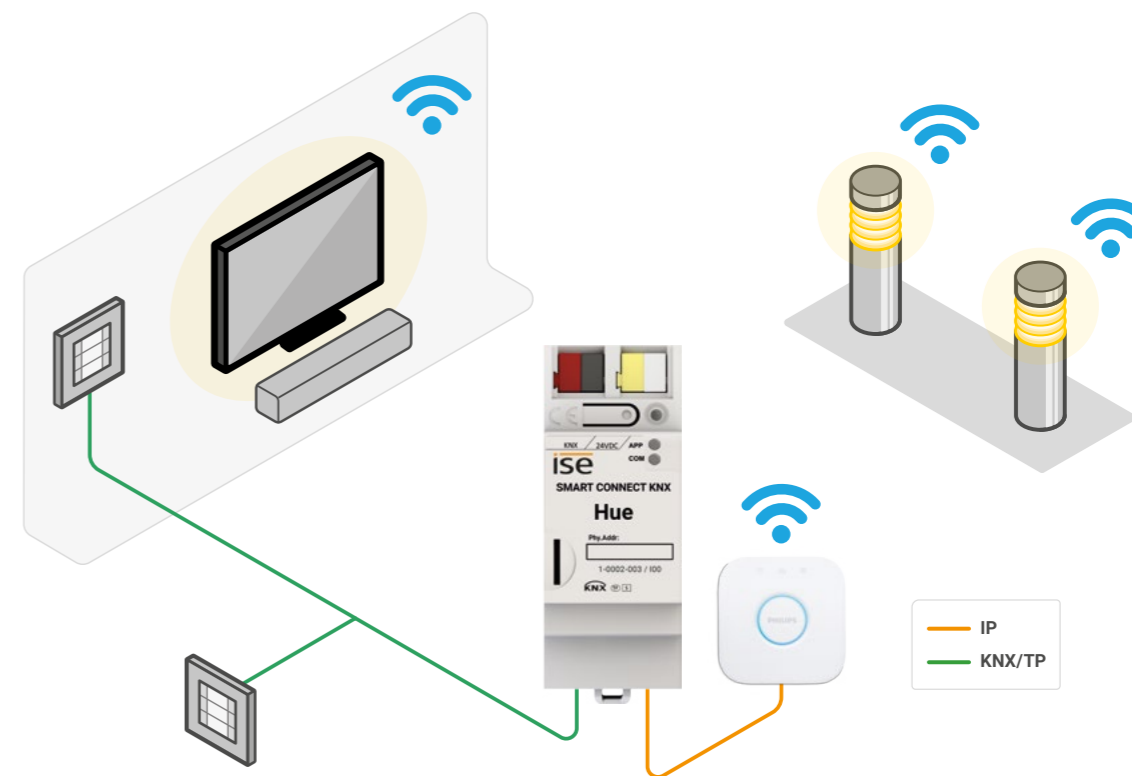
Philips Hue White and Color Ambiance starter set (E27)

**Product benefits at a glance**

- | Separate control of up to 25 Philips Hue lights
- | Support of up to from five Philips Hue Bridges per device
- | Switching and dimming
- | Individual control of RGB colour values
- | Individual control of the colour temperature
- | Configuration of switch-on brightness per lamp via ETS or device website
- | Configuration of dimming behaviour per lamp via ETS or device website
- | Colour conversion for compatibility with common Color Pickers (Gira, Elsner, Jung)
- | Calling up Philips Hue scenes
- | Signal flashing of Philips Hue scenes (specific duration, return to original state)
- | Alert flash per lamp
- | Colour gradient function per lamp
- | Connection status of Bridge or lamps on KNX
- | ETS product database entry with channel structure
- | Simple integration into the KNX (can be completely configured via ETS)
- | Additions via firmware updates

# How it works. Simple.

The SMART CONNECT KNX Hue is simply connected to your KNX installation and the home network on which your Philips Hue Bridge is also located. Use the ETS to make configurations, set up lights and you're ready to go!



# Intelligent heating control via KNX.

## SMART CONNECT KNX Vaillant

With the SMART CONNECT KNX Vaillant, you can now also switch your heating system to standby mode. This allows you to reduce the room temperature setpoint values in all rooms and minimise heating. If you simply want to respond to short-term changes in usage, times and setpoint values for heating and hot water can be changed temporarily or you can adjust ventilation control to your current requirements.



### Ordering info

Order no. S-0001-006  
(Product bundle)

### Plus points

- | Save energy during longer absences
- | Integration of heating and ventilation scenarios
- | Display of error status and temperature value for up to eight heat generators
- | Overview of consumption and yield values
- | Integration in visualisations, e.g. Gira HomeServer
- | Recommended by Vaillant
- | Additional group objects provide a great deal of key information
- | New functions can be used with both the sensoCOMFORT and multiMATIC controllers

### Technical data

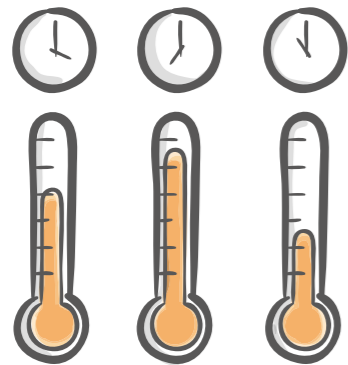
#### Gateway

<b>Rated voltage:</b>	DC 24 V to 30 V
<b>Power consumption:</b>	1.2 W
<b>IP communication:</b>	Ethernet 10/100 BaseT
<b>KNX communication:</b>	KNX/TP, S mode
<b>KNX medium:</b>	TP1-256
<b>Connections:</b>	1x RJ45 1x USB Connection and branch terminals for KNX and 24 V
<b>Ambient temperature:</b>	0 °C to +45 °C
<b>Dimensions:</b>	2 HP (DRA plus)

#### eBus adapter

<b>Rated voltage:</b>	Supply via eBUS and USB
<b>Power consumption:</b>	0.1 W
<b>Connections:</b>	Mini USB B eBUS via 2-pole screw terminal
<b>Ambient temperature:</b>	0 °C to +45 °C
<b>Dimensions:</b>	1 HP (DRA)

**Note:** Supply via external DC 24 V. Set consists of eBus adapter and gateway. Only for systems with the sensoCOMFORT or multiMATIC system controllers. For ETS5 or higher.

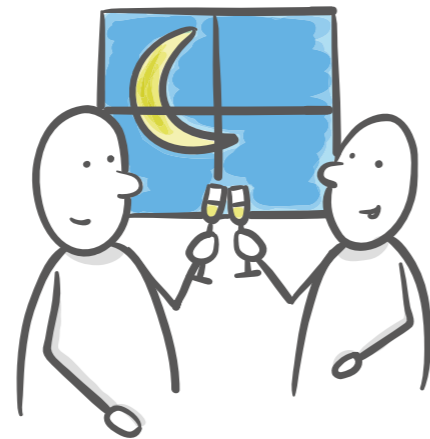


**CONTROLLING HEATING AS NEEDED**

Times and setpoint values for heating and hot water can now be easily and quickly entered into the visualisation or any other operating device. This saves energy, as the system only works when it's needed.

**INFORMED IN DETAIL**

Conveniently obtain key information directly from your heating system. Whether you are on the sofa or looking at the panel, you can read important data such as the hot water temperature, the circulation pump status or the minimum setpoint flow temperature for cooling mode quickly and clearly on your KNX visualisation display.



**AUTOMATIC VENTILATION**

The ventilation system is started automatically after a meeting, such as after the last person has left the room. In this way, the following meeting can begin in a pleasant climate.

**A MODE FOR LONG EVENINGS**

In order to continue to ensure the well-being of guests as the evening draws on, the night mode of the heating system can also be set to a later point in time with the simple push of a button.



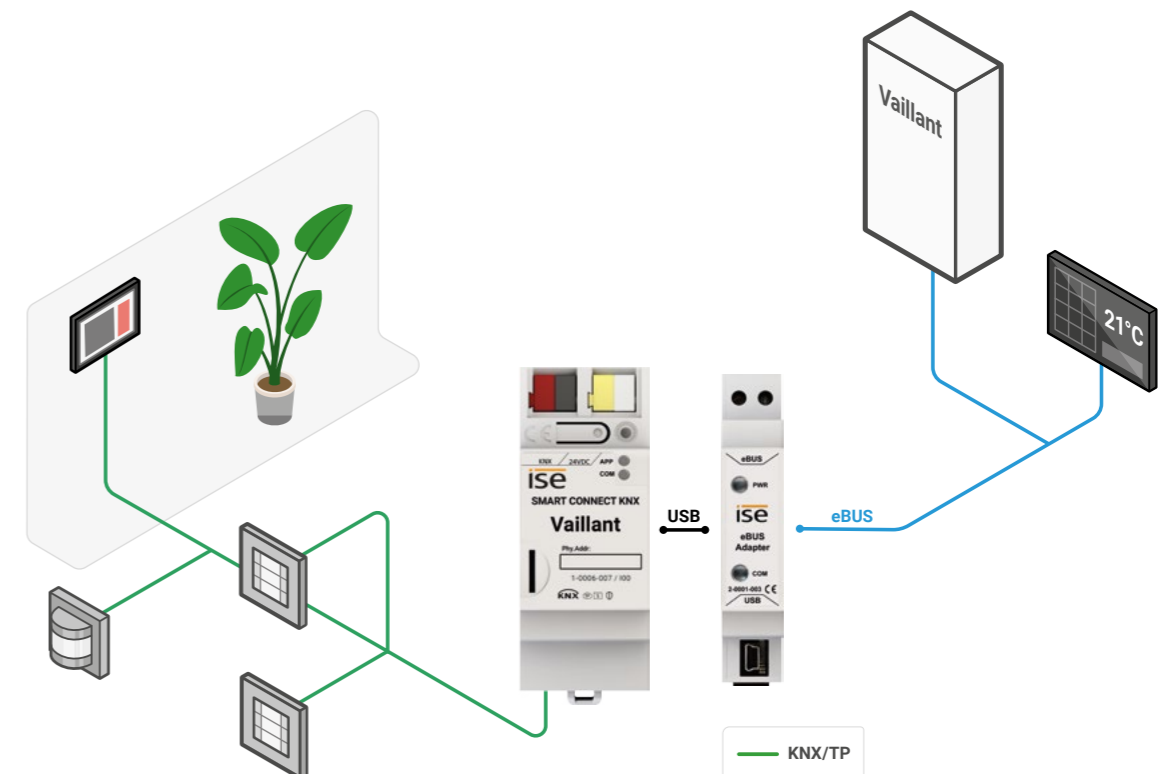
Vaillant sensoCOMFORT (top right) Vaillant MultiMatic (bottom right) and Vaillant ecoTEC exclusive (left)

**Product benefits at a glance**

- | Control of operation mode and temperature setpoint values for up to three heating zones
- | Control of operation mode and temperature setpoint value for hot water supply
- | Control of ventilation system operation mode
- | System information like service mode, error messages, date and time, outside temperature and system status
- | Heating circuit status values: Pump status, flow setpoint temperature, flow temperature, minimum flow setpoint temperature for cooling mode, heating curve for each heating circuit
- | Hot water status values: circulation pump status, charging pump/3-way valve status, hot water temperature
- | Display of error status and temperature value for up to eight heat generators
- | Yield values of solar systems and heat pumps
- | Consumption values for hot water supply and heating (electricity and gas)
- | Handover protocol from installer to system integrator
- | Simple integration into KNX (can be completely configured via ETS)
- | Easy-to-understand structure in the ETS5 thanks to channels
- | Additions via firmware updates

# How it works. Simple.

The SMART CONNECT KNX Vaillant is simply connected to your KNX installation and the eBUS. Use the ETS to make configurations and carry out the setup and that's all there is to it!



# Intelligent heating control via KNX.

## SMART CONNECT KNX Saunier Duval

With the SMART CONNECT KNX Saunier Duval you can now also switch your heating system to standby mode. This allows you to reduce the room temperature setpoint values in all rooms and minimise heating. If you simply want to respond to short-term changes in usage, times and setpoint values for heating and hot water can be changed temporarily or you can adjust ventilation control to your current requirements.



**Ordering info**  
Order no. S-0001-017

### Plus points

- | Save energy during longer absences
- | Integration of heating in usage scenarios
- | Display of error status and temperature value for up to eight heat generators
- | Overview of consumption and yield values
- | Integration in visualisations, e.g. Gira HomeServer

### Technical data

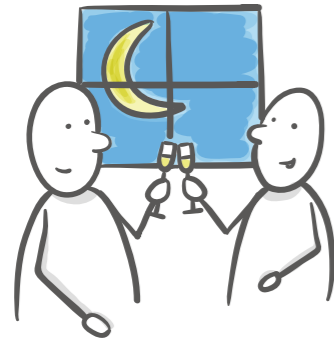
#### Gateway

<b>Rated voltage:</b>	DC 24 V to 30 V
<b>Power consumption:</b>	1.2 W
<b>IP communication:</b>	Ethernet 10/100 BaseT
<b>KNX communication:</b>	KNX/TP, S mode
<b>KNX medium:</b>	TP1-256
<b>Connections:</b>	1x RJ45 1x USB Connection and branch terminals for KNX and 24 V
<b>Ambient temperature:</b>	0 °C to +45 °C
<b>Dimensions:</b>	2 HP (DRA plus)

#### eBus adapter

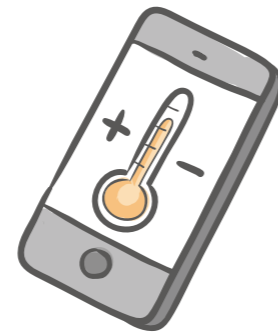
<b>Rated voltage:</b>	Supply via eBUS and USB
<b>Power consumption:</b>	0.1 W
<b>Connections:</b>	Mini USB B eBUS via 2-pole screw terminal
<b>Ambient temperature:</b>	0 °C to +45 °C
<b>Dimensions:</b>	1 HP (DRA)

**Note:** Supply via external DC 24 V. Set consists of eBus adapter and gateway. Only for systems with the MiPro Sense system controller. Saunier Duval covers all SDBG brands. For ETS5 or higher.



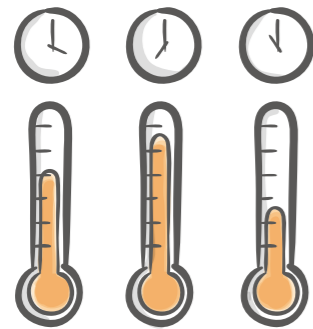
**A MODE FOR LONG EVENINGS**

In order to continue to ensure the well-being of guests as the evening draws on, the night mode of the heating system can also be set to a later point in time with the simple push of a button.



**INFORMED IN DETAIL**

Conveniently obtain key information directly from your heating system. Whether you are on the sofa or looking at the panel, you can read important data such as the hot water temperature, the circulation pump status or the minimum setpoint flow temperature for cooling mode quickly and clearly on your KNX visualisation display.



**CONTROLLING HEATING AS NEEDED**

Times and setpoint values for heating and hot water can now be easily and quickly entered into the visualisation or any other operating device. This saves energy, as the system only works when it's needed.



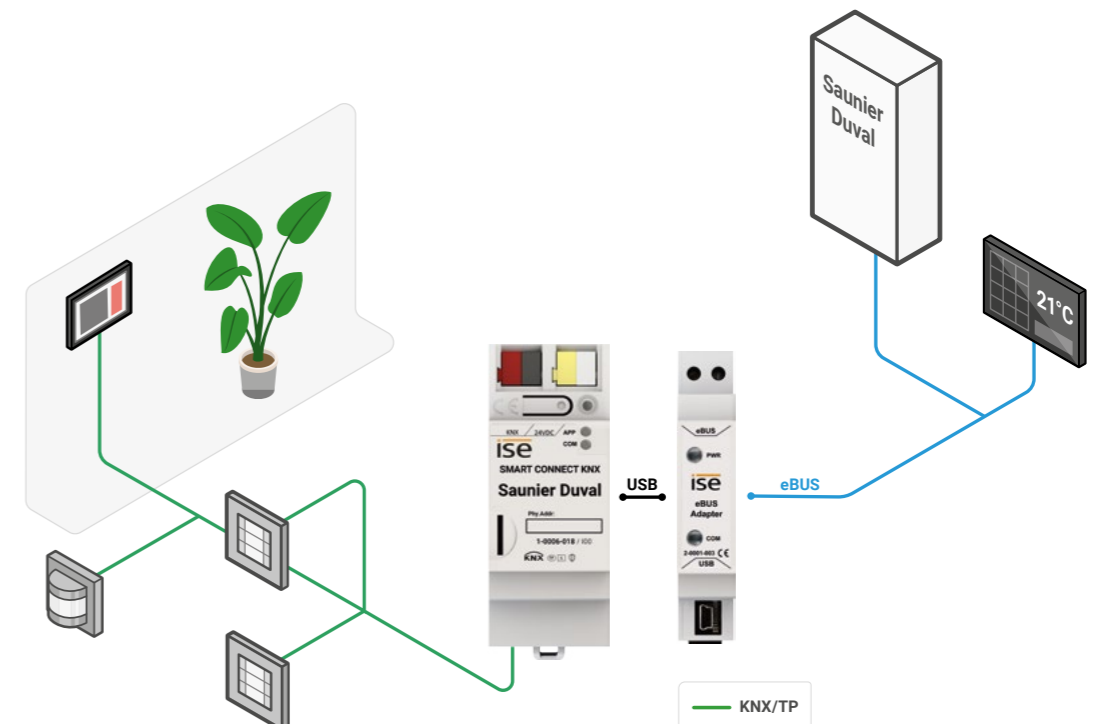
MiPro Sense

**Product benefits at a glance**

- | Control of operation mode and temperature setpoint values for up to three heating zones
- | Control of operation mode and temperature setpoint value for hot water supply
- | System information like service mode, error messages, date and time, outside temperature and system status
- | Heating circuit status values: Pump status, flow setpoint temperature, flow temperature, minimum flow setpoint temperature for cooling mode, heating curve for each heating circuit
- | Hot water status values: circulation pump status, charging pump/3-way valve status, hot water temperature
- | Display of error status and temperature value for up to eight heat generators
- | Yield values of solar systems and heat pumps
- | Consumption values for hot water supply and heating (electricity and gas)
- | Handover protocol from installer to system integrator
- | Simple integration into KNX (can be completely configured via ETS)
- | Easy-to-understand structure in the ETS5 thanks to channels
- | Additions via firmware updates

# How it works. Simple.

The SMART CONNECT KNX Saunier Duval is simply connected to your KNX installation and the eBUS. Use the ETS to make configurations and carry out the setup and that's all there is to it!



# Easy access to Vaillant GeoTHERM/3.

## SMART CONNECT Modbus Vaillant

As a Modbus TCP/IP gateway, the SMART CONNECT Modbus Vaillant provides access to a Vaillant geoTHERM/3 heat pump as well as up to three Vaillant VR60 mixer modules and up to six Vaillant VR90 remote control devices. The established Modbus TCP/IP standard enables the convenient integration of Vaillant heat pumps into the building technology (e.g. Schneider SmartStruxure, Fidelix).



### Plus points

- | Convenient integration integrate Vaillant heat pumps into the building technology
- | Control of a geoTHERM/3 heat pump via Modbus TCP/IP
- | Up to three VR60 mixer modules and up to six VR90 remote control devices can also be controlled
- | Recommended by Vaillant

### Technical data

#### Gateway

<b>Rated voltage:</b>	DC 24 V to 30 V
<b>Power consumption:</b>	1.2 W
<b>IP communication:</b>	Ethernet 10/100 BaseT
<b>Communication:</b>	Modbus TCP/IP
<b>Connections:</b>	1x RJ45 1x USB Connection and branch terminals for 24 V
<b>Ambient temperature:</b>	0 °C to +45 °C
<b>Dimensions:</b>	2 HP (DRA plus)

#### eBus adapter

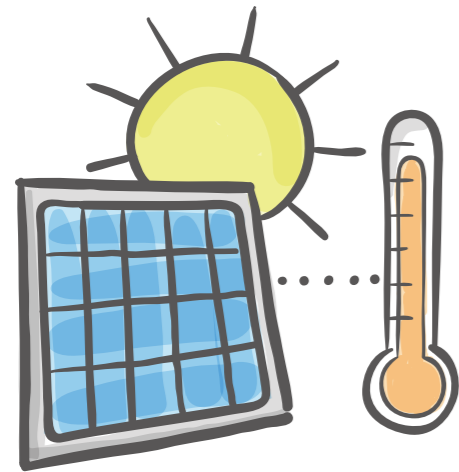
<b>Rated voltage:</b>	Supply via eBUS and USB
<b>Power consumption:</b>	0.1 W
<b>Connections:</b>	Mini USB B eBUS via 2-pole screw terminal
<b>Ambient temperature:</b>	0 °C to +45 °C
<b>Dimensions:</b>	1 HP (DRA)

**Note:** Supply via external DC 24 V. Set consists of eBus adapter and gateway. Compatible with Vaillant geoTHERM/3 VWS220/3 - 460/3 heat pumps.

### Ordering info

Order no. S-0002-007  
(Product bundle)



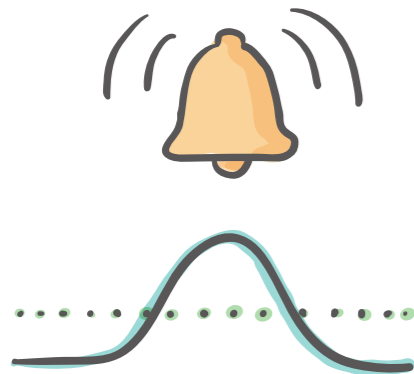
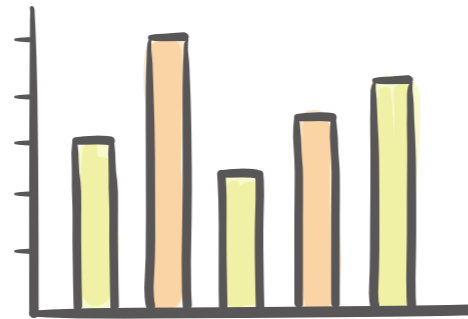


**SOLAR-POWER SYSTEM AND HEAT PUMP COMBINATION**

Utilise the sun's energy efficiently and link your solar-power system to your heating system. The SMART CONNECT MODBUS provides you with the required access to the heat pump.

**VARIABLE OPTIMISATION**

Configure your building management system (BMS) to record and visualise the system values of the heat pump. Using automatic recordings in the form of diagrams and tables, you can analyse and further refine the effectiveness of different variable optimisations.



**MONITORING**

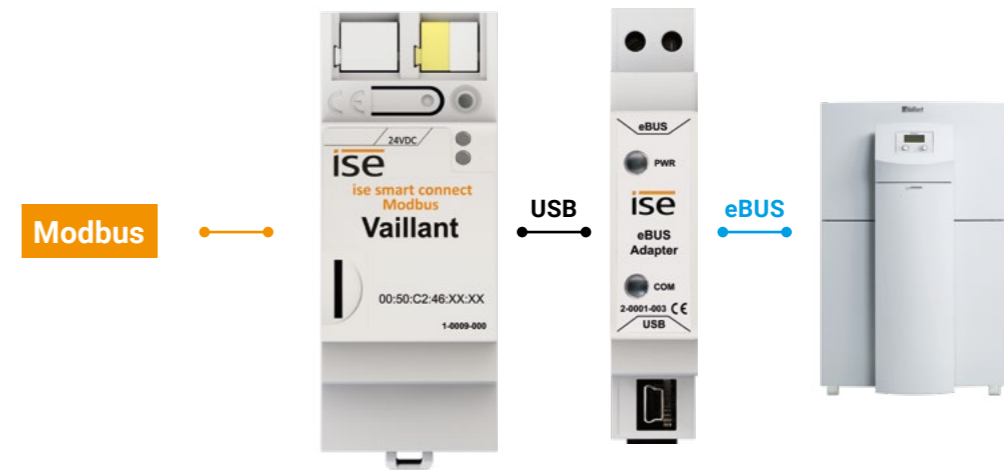
Use your BMS to create limit values which, if exceeded or undershot, trigger the system to notify you automatically. This enables a swift response to deviations. Remedy problems before comfort is impaired. Uncomfortably cold shower water is a thing of the past.

**Product benefits at a glance**

- | Control of operating mode and temperature setpoint values for the heating circuits
- | Control of operating mode for the heat pump
- | Control of operation mode for up to three mixer modules
- | Control of operating mode and temperature setpoint value for hot water supply
- | Control of the operation mode of an auxiliary heater
- | Access to status information such as temperature and pressure sensor values for integration into the building technology
- | Easy configuration of system dimensioning via the device website
- | Additions via firmware updates

**How it works. Simple.**

The SMART CONNECT Modbus Vaillant is easy to connect with the network and eBus. The network settings and Vaillant system dimensioning are configured and set up via the device website.





# Panasonic and KNX.

## Pretty smart friends.

### SMART CONNECT KNX Panasonic

The SMART CONNECT KNX PANASONIC gateway enables the customised integration of up to four televisions in the KNX. Get ready to be inspired by endless new possibilities!



#### Plus points

- | Watch IP camera images on your TV
- | Show messages on the TV device
- | KNX certification
- | Can be completely configured via ETS
- | Use your Panasonic TV device in diverse scenarios

#### Technical data

<b>Rated voltage:</b>	DC 24 V to 30 V
<b>Power consumption:</b>	2 W
<b>IP communication:</b>	Ethernet 10/100 BaseT
<b>KNX communication:</b>	KNX/TP, S mode
<b>KNX medium:</b>	TP1-256
<b>Connections:</b>	2 x RJ45 (integrated switch) Connection and branch terminals for KNX and 24 V
<b>Ambient temperature:</b>	0 °C to +45 °C
<b>Dimensions:</b>	2 HP (DRA plus)

**Note:** Supply via external DC 24 V. Please note: for supported Panasonic models and countries, see the Panasonic compatibility list at [www.ise.de](http://www.ise.de). For ETS 5 or higher.



**Ordering info**  
Order no. 1-000C-000



**CONVENIENT WAKE-UP**

A smart day is dawning. The blinds slowly open, allowing daylight to flood the room. Your Panasonic TV device greets you with your favourite news channel.

**LEAVING THE HOUSE**

After catching up on the latest news, you leave the house. It's not only the lighting that switches off – your Panasonic TV device will turn to standby or become part of the occupied-home simulation for burglary prevention.

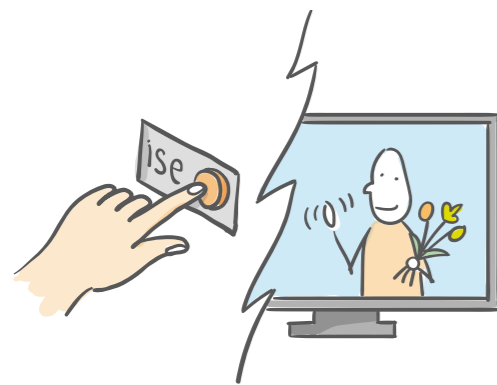
**YOUR MESSAGES ON THE TV**

Is your smart washing machine finished? Movement detected in the garden? Through self-defined screen texts, you can also choose to display such messages on your TV. Convenient customisation.



**AN EVENING OF CINEMA**

You've had a busy day – it's time to relax and enjoy the evening! Your customised cinema experience starts as soon as you switch on your Panasonic TV device. Blinds darken the room, light and sound create the perfect ambience. Fetch the popcorn and some friends and get ready for an authentic cinema sensation.



**SOMEONE'S AT THE DOOR**

Just one glance at your Panasonic TV device will tell you whether your guests have arrived at the door. See what's happening on the external camera conveniently from the sofa.

**SAVE STANDBY COSTS**

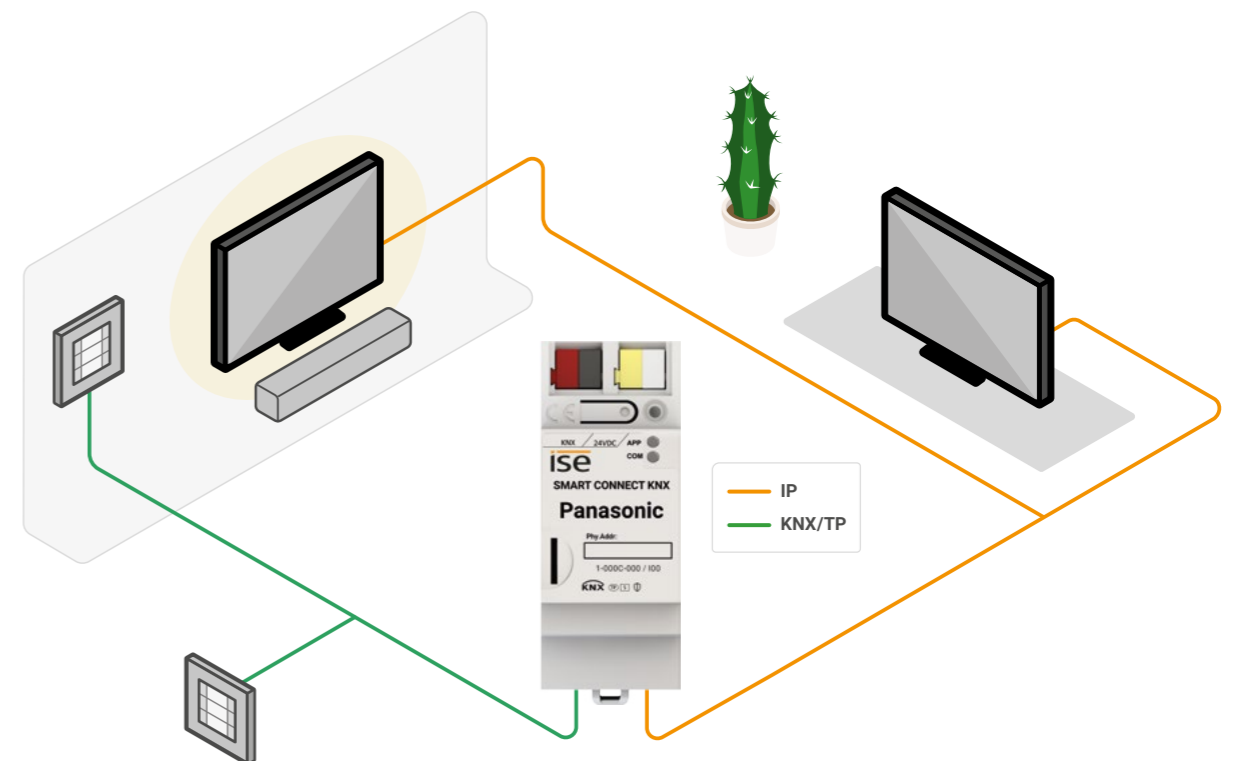
Do you want to save energy? If your Panasonic TV device is switched to standby, the device socket outlet will be switched off after a defined period, and will only switch on again through a TV scene or motion detector.

**Product benefits at a glance**

- | Control of up to 4 TV devices
- | Switch the TV device on and off
- | "Wake up" the TV device via Wake on LAN and then switch it on
- | Control the volume (switch sound on and off, turn volume up/down or set it directly to an absolute or relative value)
- | Program control (switch to previous program channel or select a specific station)
- | Transfer camera images, for instance from an external camera
- | Store up to ten links
- | Display messages on TV device: use up to ten self-defined texts or dynamically display texts from other devices, e.g. "Movement detected in garden" from an outside camera
- | Source selection: flexibility of choice between the sources of the TV device, e.g. switch conveniently between HDMI input and receivers
- | Status displays: current station, source, volume, mute state, operating state or error status
- | Simple integration into KNX (can be completely configured via ETS)
- | Additions via firmware updates

# How it works. Simple.

The SMART CONNECT KNX Panasonic is simply connected to your KNX installation and the home network on which your Panasonic TV device is also located. Use the ETS to configure the gateway and you're ready to go!

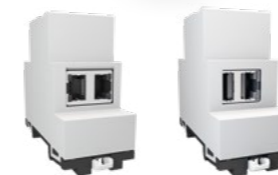


# Everything's possible.

## From electricity meters to heating.

### SMART CONNECT KNX Programmable

From electricity meter to heating: With the SMART CONNECT KNX Programmable, third-party devices can be connected to the KNX bus simply and reliably. For communication with the third-party system, the IP and USB interfaces can be used. The Programmable is the first successful affordable alternative to costly device development.



#### Ordering info

Order no.  
1-0005-006  
2 x RJ45

#### Ordering info

Order no.  
1-0004-005  
1 x USB, 1 x RJ45

#### Plus points

- Simple integration of third-party systems into KNX
- Ready-certified KNX device
- Connection of third-party systems via IP or USB
- Execution of .NET application (C# or VB.Net)
- Comprehensive SDK
- Protection of own application against unintentional duplication

#### Product benefits at a glance

- Programming of the application in C# or VB.Net.
- Up to 64 KNX group objects (variable bit length)
- 1x IP and 1x USB connection (version 1-0004-005) or 2x IP connection (version 1-0005-006)
- Ready-certified KNX device (can be completely configured via ETS)\*
- Additions via firmware updates

#### Technical data

<b>Rated voltage:</b>	DC 24 V to 30 V
<b>Power consumption:</b>	2 W (Ethernet version: 2x RJ45) 3 W (USB version: RJ45 + USB with 300 mA)
<b>IP communication:</b>	Ethernet 10/100 BaseT
<b>KNX communication:</b>	KNX/TP, S mode
<b>KNX medium:</b>	TP1-256
<b>Connections:</b>	2x RJ45 with integrated switch (Ethernet version) RJ45 + USB (USB version) Connection and branch terminals for KNX and 24 V
<b>Ambient temperature:</b>	0 °C to +45 °C
<b>Dimensions:</b>	2 HP (DRA plus)

**Note:** Supply via external DC 24 V. For ETS5 or higher.

\*The KNX certification for the SMART CONNECT KNX Programmable is limited to the interworking ability with KNX products from other manufacturers.

# Powered by Programmable.

Everything's possible with SMART CONNECT KNX Programmable



## Your finger. Your key.

### EKEY KNX CONNECT. WE CONNECT EKEY WITH YOUR SMART HOME.

Fingerprints have not only been a resounding success on smartphones and tablets, but also in access control for companies or private residential buildings. Blocking and lost or stolen keys will become a thing of the past with an ekey fingerprint access solution – you always have your finger with you.

#### Technical data and retailer info:

NETYARD AG  
 Schanzenstr. 40  
 40549 Düsseldorf  
 Germany  
 igt@netyard.de  
 www.netyard.de/ekey

## E3/ DC stores your electricity and is designed to incorporate KNX.

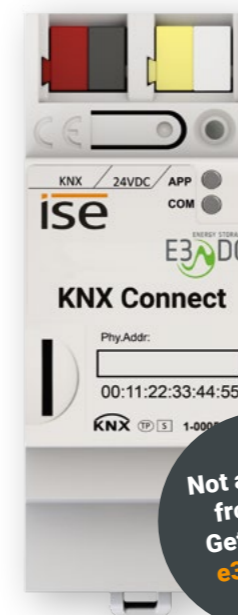
The S10 Hauskraftwerk home power station is a classic in the E3/DC range. Featuring a solar power inverter, energy management and online portal, this all-in-one system stores solar electricity efficiently and provides power to devices right when they need it. This means the Hauskraftwerk electricity storage system and the central power switching unit are rolled into one, allowing E3/DC customers to achieve a very high level of self-sufficiency. E3/DC has also developed the unique

TriLINK® technology for this home power station. It provides backup power supply with solar recharging in the event of a power failure.

The KNX CONNECT module from E3/DC GmbH is based on the PROGRAMMABLE and integrates the S10 series home power station into KNX.

#### Technical data and retailer info:

E3/DC GmbH  
 Karlstrasse 5  
 49074 Osnabrück  
 Germany  
 Tel.: +49 (0)541 760268-0  
 Fax: +49 (0)541 760268-199  
 info@e3dc.com  
 www.e3dc.com



Would you too like to integrate your products and services into KNX? Let us know!

T +49 (0)441 68006-11 | E sales@ise.de

# KNX RF Multi:

## the next generation radio.

### Reliable. Low Power. KNX Secure. Backward compatible.

The new wireless standard enables us to integrate KNX RF further into our products and design brand-new product concepts. The protocol increases reliability through redundancy and feedback. If a channel is faulty or a device fails to report back, Multi ensures smooth communication. Another intelligent development has been implemented in the KNX RF Multi protocol that significantly reduces power consumption and enables battery-operated devices to be parametrised natively in S mode. Our world first, the KNX RF Multi radiator thermostat, also makes use of this new option, and is guaranteed to impress with a battery life that is almost revolutionary in KNX.

KNX Secure also ensures optimal security and downward compatibility is fully guaranteed. Existing, older-generation KNX RF products such as push buttons, switches and window contacts are easy to integrate in new buildings, existing buildings and extensions to existing KNX systems.



KNX RF Multi/TP  
media coupler or RF repeater

**Ordering info**  
Order no. 3-0002-005



KNX RF Multi  
radiator thermostat

**Ordering info**  
Order no. 3-0004-007



KNX RF Multi  
USB interface

**Ordering info**  
Order no. 3-0003-006



# “Simply The Best!”

## It's time to do what you want!

### KNX RF Multi/TP media coupler oder RF repeater

The media coupler enables both the expansion of existing systems and targeted operation in new buildings. Whether KNX RF Ready or KNX RF Multi, with or without KNX Secure, as a line coupler, segment coupler or as a repeater – the media coupler brings everyone and everything together.



#### Plus points

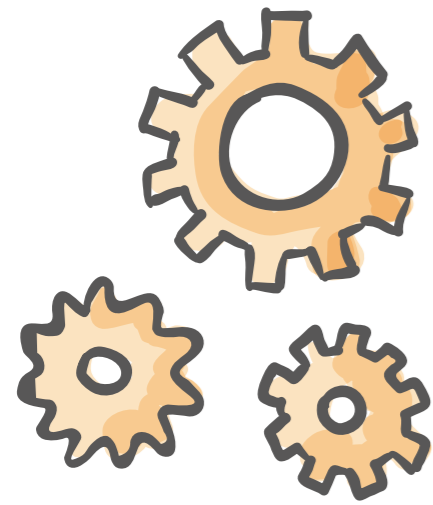
- | Combination of KNX devices with or without Secure in one installation
- | Existing KNX RF.1 (Ready) products and installations can be easily combined and extended with the media coupler
- | Segments can be used for the first time (from ETS6)
- | Always up-to-date with updates via KNX RF or KNX TP
- | Range expansion when used as repeater (ETS Retransmitter)

#### Technical data

- Rated voltage:** Supply from KNX bus or 24 V SEL
- Current consumption:** 8 mA
- KNX communication:** KNX/TP, S-Mode  
RF1.R (Ready) 868,3 MHz  
RF1.M (Multi) 868,3 MHz, 868,95 MHz, 869,85 MHz, 869,525 MHz
- RF transmission power:** max. 25 mW
- Transmission range in free field:** 100 m (typical)
- Connections:** KNX bus connection terminal
- Ambient temperature:** -5 °C to +45 °C
- Dimensions:** 43 mm x 28 mm x 15 mm



**Ordering info**  
Order no. 3-0002-005



**EXPAND EXISTING SYSTEMS**

Continue to use the installed devices in the existing building and benefit from the advantages of KNX RF Multi at the same time.

**EXTENSIVE INSTALLATIONS ARE NO OBSTACLE**

In order to extend the radio range, the media coupler can be used as a repeater. This makes problems with radio coverage a thing of the past.



**SIMPLY CONTINUE USING KNX RF DEVICES**

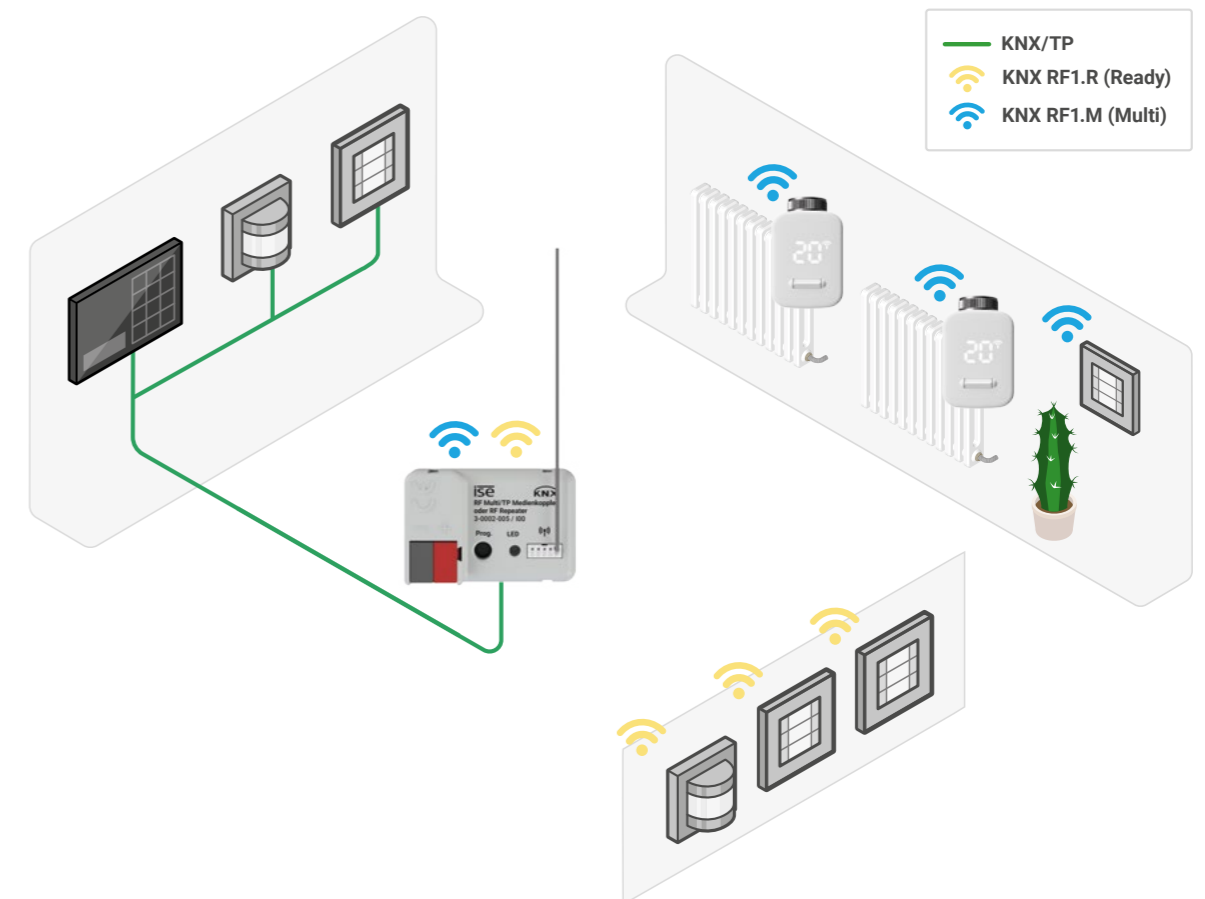
The media coupler easily integrates existing devices in a downward-compatible manner. Future devices are just as easy to integrate thanks to the KNX RF Multi standard.



**Product benefits at a glance**

- | Security Proxy connects KNX devices with and without Secure in one installation
- | Ready to Slow Proxy connects KNX RF Ready with KNX RF Multi
- | Line coupler, segment coupler from ETS6
- | Repeater (Multi or Ready) for radio range expansion
- | Filtering/blocking of group addresses supported
- | LED with wide range of functions facilitates installation and diagnostics
- | Complete group address range is covered
- | Support of long frames
- | KNX Secure ensures optimal security
- | Existing installations can also be expanded downward
- | Interlocked fast/slow communication in one single device
- | RF programming lock (programming via TP only) enables secure operation, e.g. in hotels and other publicly accessible rooms
- | Can be updated via KNX TP and KNX RF, keeping it up to date with little effort.

**How it works. Simple.**





# Loooong lasting comfort.

## KNX RF Multi radiator thermostat

Immediately enhances the ease of living after a straightforward, wireless installation: whether in a new or existing building, the energy-saving radiator thermostat ensures a comfortable temperature throughout the house. With boost function, integrated temperature sensor or actual temperature via KNX and many more functions, it not only guarantees ease of living, but also reduces energy consumption and costs through needs-based heating. Under typical conditions, it has a battery life of up to two years or more.



### Plus points

- | First battery-operated KNX RF S mode radiator thermostat
- | Long battery life
- | Existing installations can be easily retrofitted and extended
- | KNX Secure ensures optimal security
- | Integration of door/window contacts and other devices via KNX

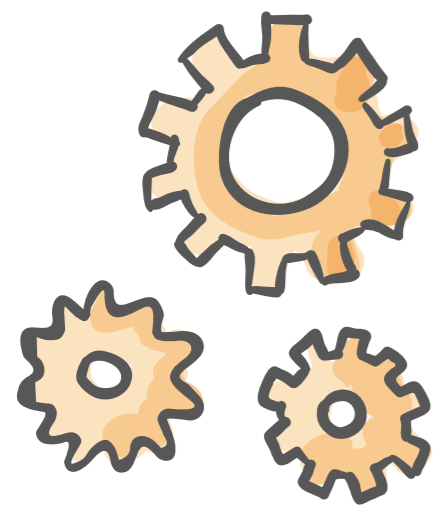
### Technical data

<b>Rated voltage:</b>	Supply via 2 x AA battery
<b>Battery life:</b>	Typically two heating periods
<b>KNX communication:</b>	RF1.M (Multi) 868,3 MHz, 868,95 MHz, 869,85 MHz, 869,525 MHz max. 25 mW
<b>RF transmission power:</b>	
<b>Transmission range in free field:</b>	100 m (typical)
<b>Threaded connection:</b>	M 30 x 1,5 mm
<b>Set force:</b>	max. 120 N
<b>Ambient temperature:</b>	0 °C to +50 °C
<b>Dimensions:</b>	53 mm x 85 mm x 70 mm

**Note:** A KNX RF Multi media coupler is required for operation!

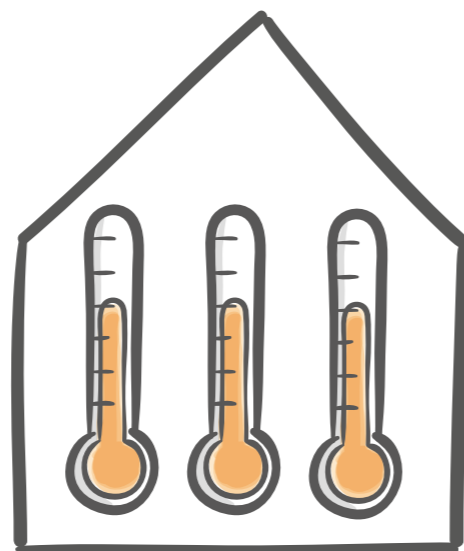


**Ordering info**  
Art.-Nr. 3-0004-007



**RETROFITS IN EXISTING BUILDINGS**

Take advantage of the uncomplicated installation and advantages of KNX radio to extend existing installations without great effort. The perfect wireless solution awaits every building.



**ONE ROOM, ONE TEMPERATURE**

Numerous configuration options enable several heating thermostats to be grouped or controlled together or used in scenes..



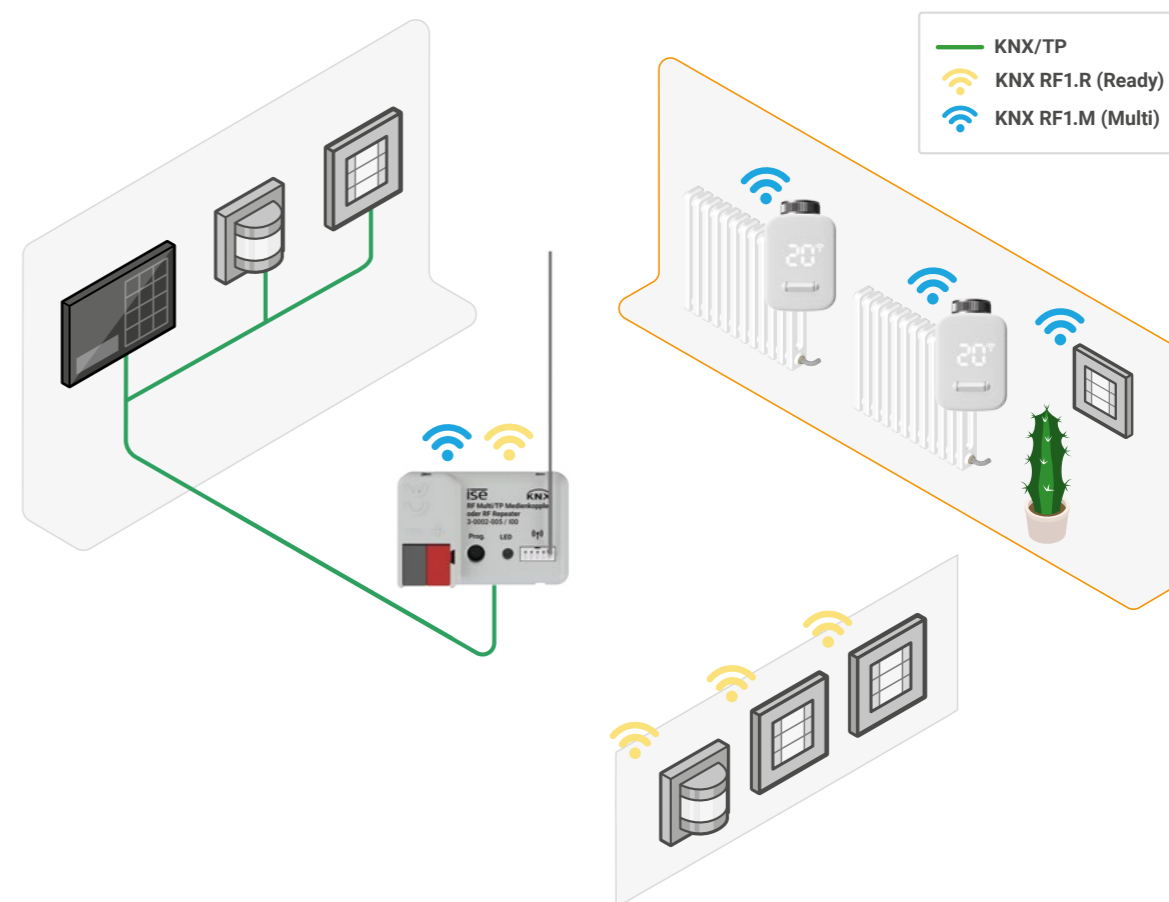
**EXPLOIT SYNERGIES**

Combine the radiator thermostat with the media coupler in order to create links with KNX TP sensors, push buttons, many other KNX devices and visualisations. The world is your oyster.

**Product benefits at a glance**

- | First battery-operated KNX RF S mode radiator thermostat
- | Long battery life
- | Existing installations can be easily retrofitted and extended via KNX
- | Integration of door/window contacts and other devices via KNX
- | Manual operation or in KNX RF S mode
- | Internal temperature sensor or measured values via group object
- | Boost function
- | Battery status detection
- | Four operating modes (comfort, standby, night mode, frost protection)
- | Operating modes (summer/winter)
- | Output of fault messages (e.g. valve jammed)
- | Configurable forced setting
- | Setpoint value display on device
- | Service mode available
- | Scenes can be configured individually
- | Main device/auxiliary device dependencies enable grouping of multiple thermostats
- | Output of "in operation" (heartbeat) group object
- | Automatic valve rinsing to prevent calcification
- | Configurable setpoint values for each mode and heating program
- | Full support of KNX Secure
- | Support of long frames
- | Can be updated via KNX RF

**How it works. Simple.**



# Program and analyse.

## Wirelessly into the KNX.

### KNX RF Multi **USB** interface

You don't fancy cable spaghetti? Then wireless access to the KNX installation is what you're looking for. Regardless of whether for commissioning or diagnostics, the USB interface and the ETS can be used to program, control or service an RF installation.



#### Plus points

- | Support of KNX RF Multi
- | Support of KNX RF Ready
- | Wireless communication between PC and KNX RF
- | Commissioning and troubleshooting via ETS6 (KNX RF Multi) or ETS5 (only KNX RF Ready)
- | Advanced diagnostics through the display of various radio channels via the ETS. (One stick per channel required for simultaneous queries!)
- | Support of long frames
- | No additional USB driver required

#### Technical data

<b>Rated voltage:</b>	DC 5 V
<b>Current consumption:</b>	25 mA
<b>KNX communication:</b>	<b>RF1.R (Ready)</b> 868,3 MHz
	<b>RF1.M (Multi)</b> 868,3 MHz, 868,95 MHz, 869,85 MHz, 869,525 MHz
<b>RF transmission power:</b>	max. 25 mW
<b>Transmission range in free field:</b>	100 m (typical)
<b>USB port:</b>	2.0 type A
<b>Ambient temperature:</b>	-10 °C to +55 °C
<b>Dimensions:</b>	21 mm x 59 mm x 7,5 mm
<b>Note:</b>	For ETS6 (KNX RF Multi) or ETS5 (only KNX RF Ready)



**Ordering info**  
Order no. 3-0003-006



# KNX can now see. That's for sure.

## SMART APP KNX Axis

Combine the world of KNX with the security technology of Axis Communications. Utilise the strengths of both worlds and integrate network cameras, door stations and network loudspeakers into the KNX – with no additional hardware. Simply install our plug-in on the Axis IP product, configure and you're ready to go!



Axis Dome Q37



Axis P1364 network camera

### Plus points

- | Perfect integration of Axis network devices into usage scenarios
- | Stronger combination of both systems, motion detector (KNX) triggers recording or Cross Line Detection (camera) switches on the light
- | Privacy (masking) can be controlled via KNX, for instance through presence or absence
- | Camera responds directly to KNX/IP after successful installation
- | Third-party applications on the camera can also communicate with KNX
- | In addition to network cameras, all Axis network devices with ACAP are also supported

### Technical data

**KNX communication:** KNX/IP (routing), S mode

**Note:** The plug-in can only be used on network devices from Axis Communications with ACAP support. Please see [www.ise.de](http://www.ise.de) for supported camera requirements. For ETS5 or higher.



### Ordering info

Order no. single licence A-0001-008  
Order no. 5 volume licence A-0001-019  
Order no. 10 volume licence A-0001-020



**RELIABLE MOTION DETECTION VIA KNX**

Who needs umpteen camera recordings of trees moving in the wind or moths flitting around the light? In future, use your KNX motion detector to start recordings and record only those things which are important.

**ENJOY YOUR PRIVATE SPHERE**

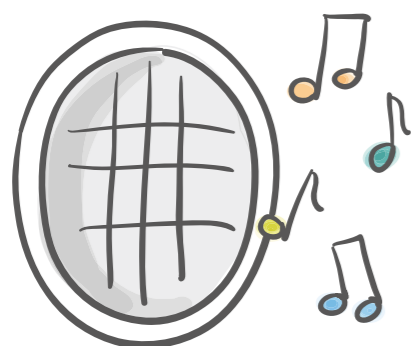
If you'd like to enjoy the garden, simply disable motion detection and/or enable the private zone masks on your surveillance camera, for instance with a KNX door contact on your terrace door. No more bothersome disconnection of the PoE power supply!

**THE CAMERA PRODUCES THE DETERRENT**

If unauthorised persons tamper with your house, the camera registers this movement and not only starts recording, but also switches on the lighting and television via KNX as well as dog barking or voices, for instance via your Sonos sound system. There are no limits to your imagination. Discover deterrents on a whole new level.

**OUTWITTING MADE DIFFICULT**

Someone sabotages your camera by covering it or spraying it with paint. As soon as this happens, an alarm is triggered and you are notified. This means you can actively intervene as the event unfolds, not after the saboteur has finished the job.



**DOOR STATION WITH KNX**

Don't just integrate network-only cameras into the KNX – include your door stations from Axis Communications as well. Use the call button to play a ring tone via your Sonos sound system, for example.

**LOUDSPEAKER WITH KNX**

Your Axis Communications loudspeakers can be integrated into your KNX system as well, thus enabling the control of loud-speaker playback in your shop, for example.

**Product benefits at a glance**

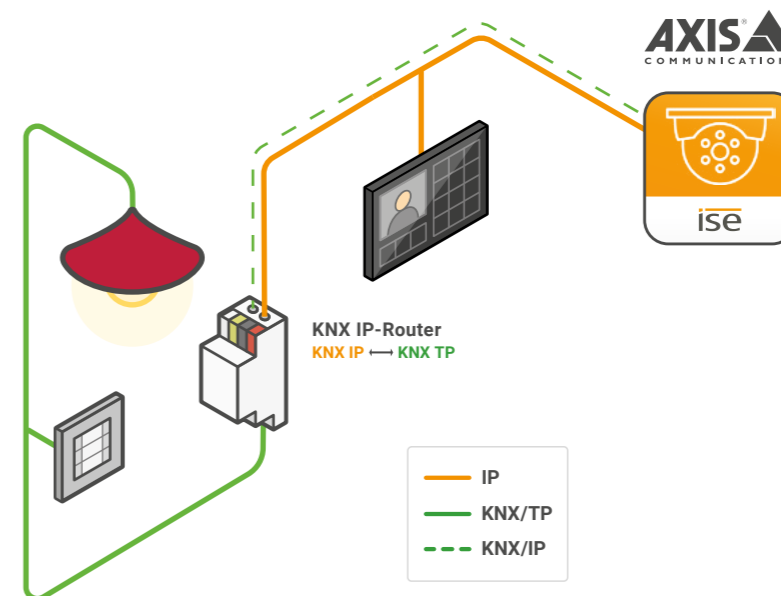
- | Support of Axis network cameras
- | Support of Axis WLAN cameras\*
- | Support of Axis D2050-VE Network Radar Detector
- | Support of Axis door stations
- | Support of Axis network loudspeakers
- | 30 group objects for sending from KNX to the Axis camera (1 bit)
- | 30 group objects for sending from the Axis camera to KNX (variable bit length)
- | Control of actions on the camera
- | Triggering of image, video and/or camera message sending
- | With PTZ cameras, predefined positions can be focused on
- | Camera settings (properties) can be read out and sent to the KNX
- | Sending of a message to the KNX with access to the camera's live stream
- | Monitoring of the camera itself, such as for overheating or connection interruption to the video saving location
- | Third-party applications can send values to the KNX
- | Simple integration into KNX (can be completely configured via ETS and the camera's event system)

*\*Only in combination with other system components that support reliable communication, such as Gira KNX/IP router.*

# How it works. Simple.

The SMART APP KNX Axis plug-in is installed directly on a network device (such network camera) based on an Axis ACAP (AXIS Camera Application Platform). After successful installation, the Axis network device is a KNX/IP device and communicates with the world of KNX via KNX/IP routing. The plug-in is configured on the network device (event system) and in the ETS.

KNX installations are usually implemented with two wires (TP), meaning that a KNX/IP router has to be present in this installation (often already present in KNX visualisation systems) to enable communication between KNX/IP and KNX/TP.



# We inspire. That's a promise.

## CONSULTING AND SALES

**T** +49 (0)441 68006-11

**F** +49 (0)441 68006-15

**E** sales@ise.de

Further national and international specialist electrical trade partners can be found on our website  
[www.ise.de/en/products/sources-of-supply](http://www.ise.de/en/products/sources-of-supply)

## SUPPORT

If you have any technical questions on products you have already purchased, please contact our support department from Monday to Friday from 8:30 – 4:30 p.m. or by e-mail.

**T** +49 (0)441 68006-12

**F** +49 (0)441 68006-15

**E** support@ise.de

## GENERAL CONTACT

ise Individuelle Software und Elektronik GmbH  
Osterstraße 15  
26122 Oldenburg, Germany

**T** +49 (0)441 68006-0

**F** +49 (0)441 68006-10

**E** info@ise.de



## OUR NEWSLETTER. REGISTER NOW!

We keep you up to date on software developments, new products, firmware updates, tips, tricks and much more. Simply subscribe to our newsletter: [www.ise.de/en/news/newsletter](http://www.ise.de/en/news/newsletter)

## UPDATES ENSURE THE CONTINUOUS IMPROVEMENT OF OUR PRODUCTS. CHECK AT WWW.ISE.DE

More information, technical documentation, data sheets, software, the latest firmware and much more can be found on our website under the corresponding products. If you can't find what you're looking for, please get in touch with us.

ise.de

**SAY HELLO**



**ise Individuelle Software und Elektronik GmbH**  
Osterstraße 15, 26122 Oldenburg, Germany  
**T** +49 441 68006-11 **F** +49 441 68006-15 **E** sales@ise.de